



Thomas Frye Court, High Street Stratford, Stratford, E15 2PS

£405 Per Week

A 1 BEDROOM FLAT FOR RENT IN 'ONE STRATFORD' E15

Located between Bow E3 and Stratford E15, within easy walking distance to Pudding Mill Lane DLR, Bow Church DLR, Bow Road Tube and Stratford Station, with Westfield shopping centre also near by.

Open plan living room with modern fitted kitchen, fitted bedroom, modern bathroom suite and terrace with great views.

The apartment comes furnished, 24 hour concierge.

PROPERTY AVAILABLE FROM 12.06.2026

- 1 Bedroom Apartment
- Fitted Kitchen
- 24 Hr Concierge
- Comes Furnished
- Modern Bathroom Suite
- Walk to Westfield Shopping Center
- Walk To 3 Stations
- Available From 12.06.2026

Thomas Frye Court, High Street Stratford, Stratford, E15 2PS



RECEPTION ROOM



KITCHEN



RECEPTION ROOM VIEW



BEDROOM



LIVING SPACE



BEDROOM VIEW

Thomas Frye Court, High Street Stratford, Stratford, E15 2PS



BATHROOM



GEORGE HUDSON TOWER



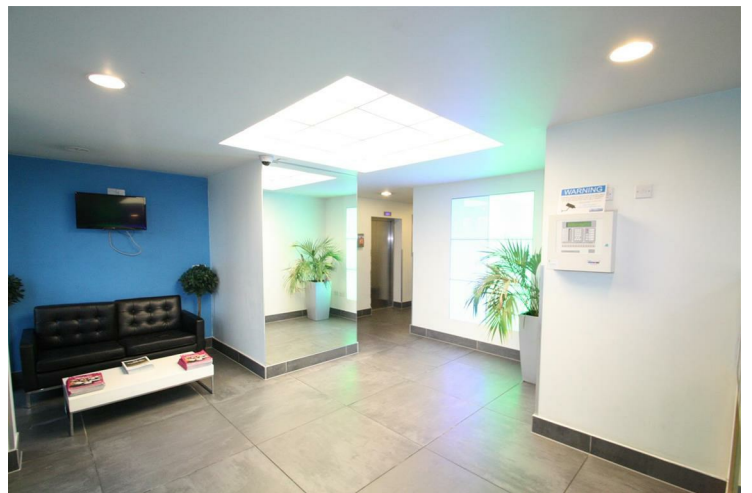
BALCONY



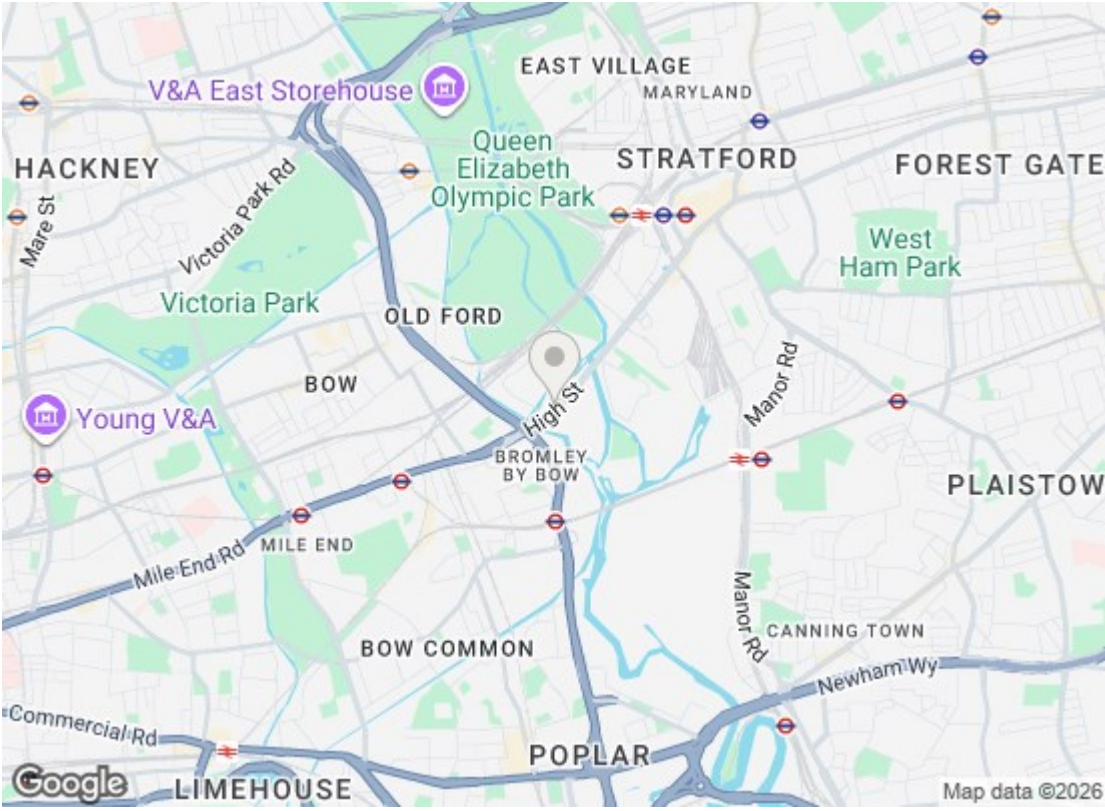
CONCIERGE



BALCONY VIEW



CONCIERGE VIEW



Energy Efficiency Rating

	Current	Potential
<i>Very energy efficient - lower running costs</i>		
(92 plus) A		
(81-91) B	83	83
(69-80) C		
(55-68) D		
(39-54) E		
(21-38) F		
(1-20) G		
<i>Not energy efficient - higher running costs</i>		

England & Wales EU Directive 2002/91/EC

Environmental Impact (CO₂) Rating

	Current	Potential
<i>Very environmentally friendly - lower CO₂ emissions</i>		
(92 plus) A		
(81-91) B		
(69-80) C		
(55-68) D		
(39-54) E		
(21-38) F		
(1-20) G		
<i>Not environmentally friendly - higher CO₂ emissions</i>		

England & Wales EU Directive 2002/91/EC

We have prepared these property particulars as a general guide to a broad description of the property. They are not intended to constitute part of an offer or contract. We have not carried out a structural survey and the services, appliances and specific fittings have not been tested. All photographs, measurements, floorplans and distances referred to are given as a guide only and should not be relied upon for the purchase of carpets or any other fixtures or fittings. Lease details, service charges and ground rent (where applicable) and council tax are given as a guide only and should be checked and confirmed by your Solicitor prior to exchange of contracts.